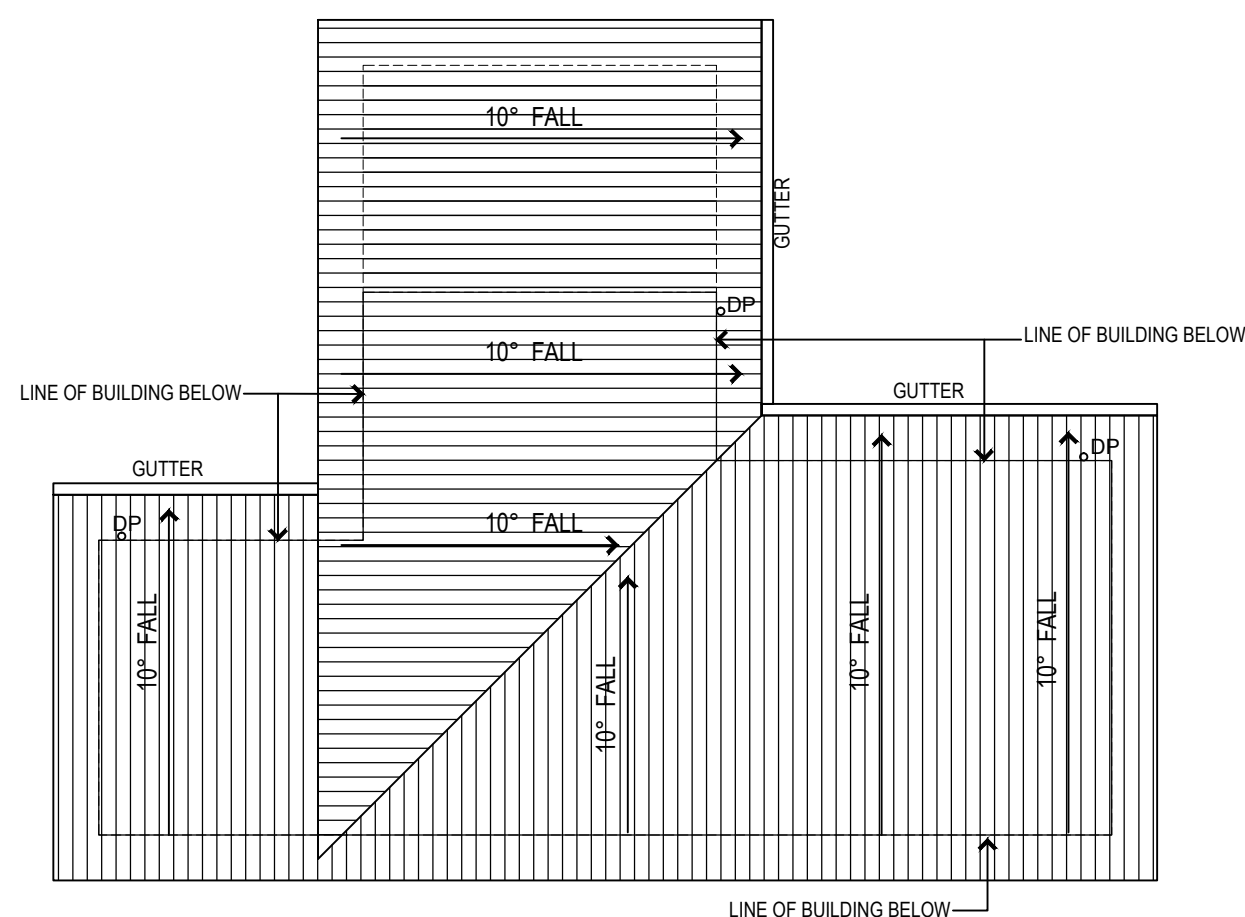
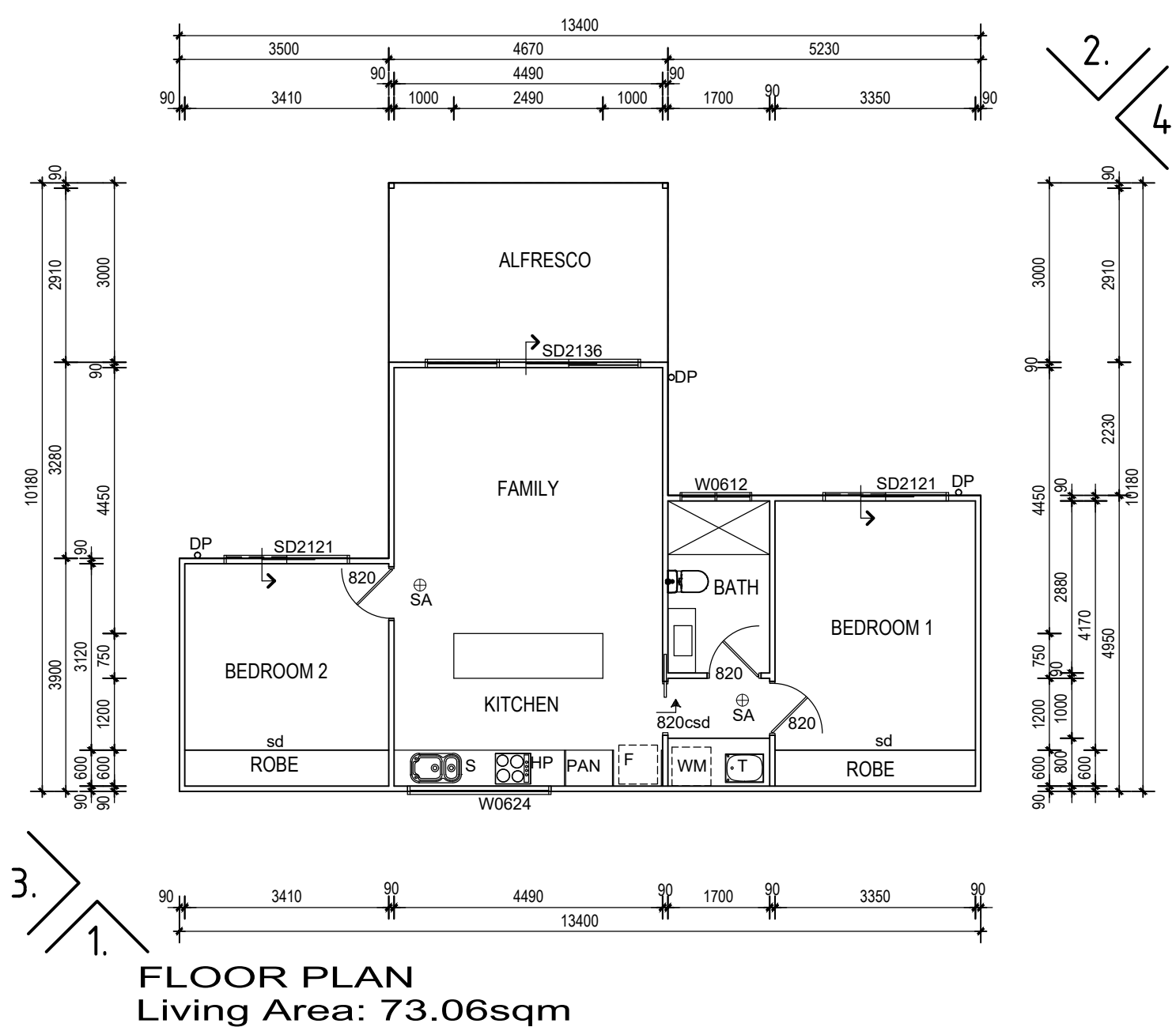
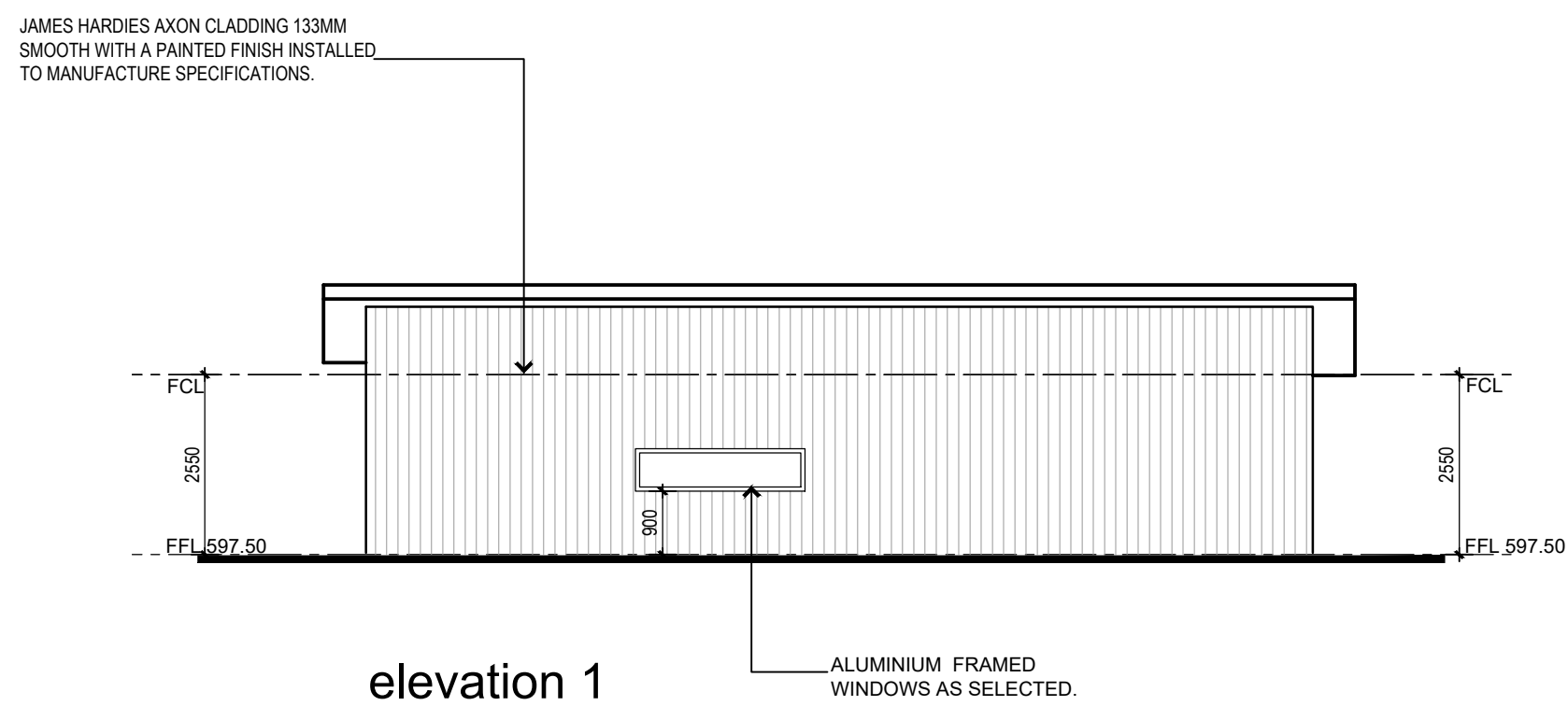


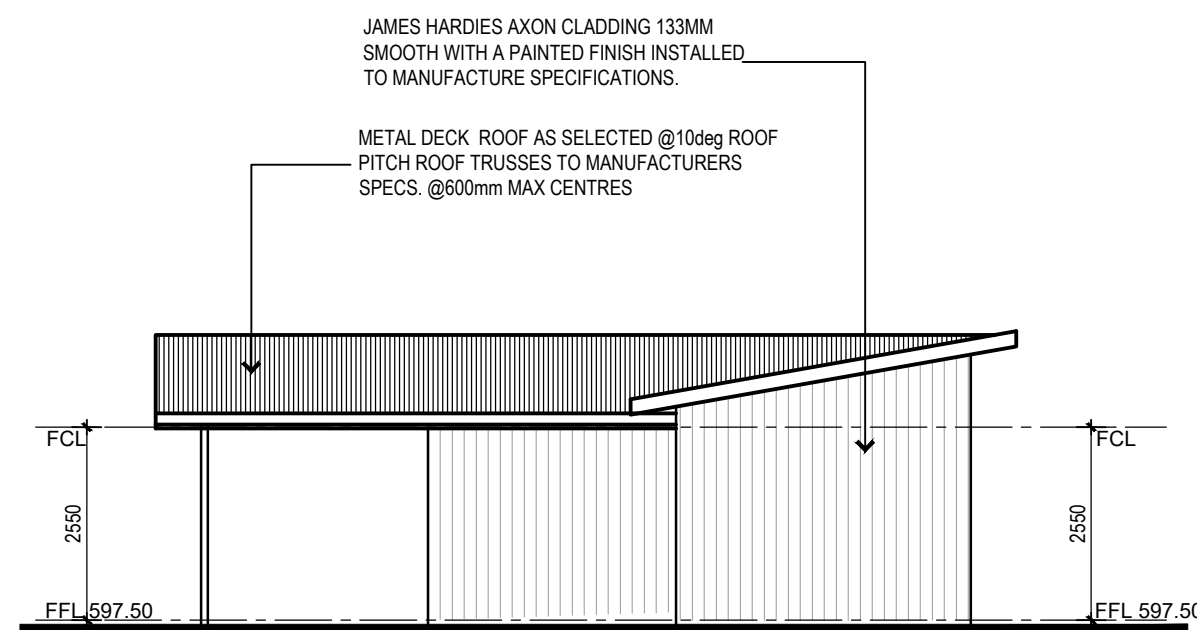
REFER TO SHEETS A500 & A501 FOR
BASIX REQUIREMENTS



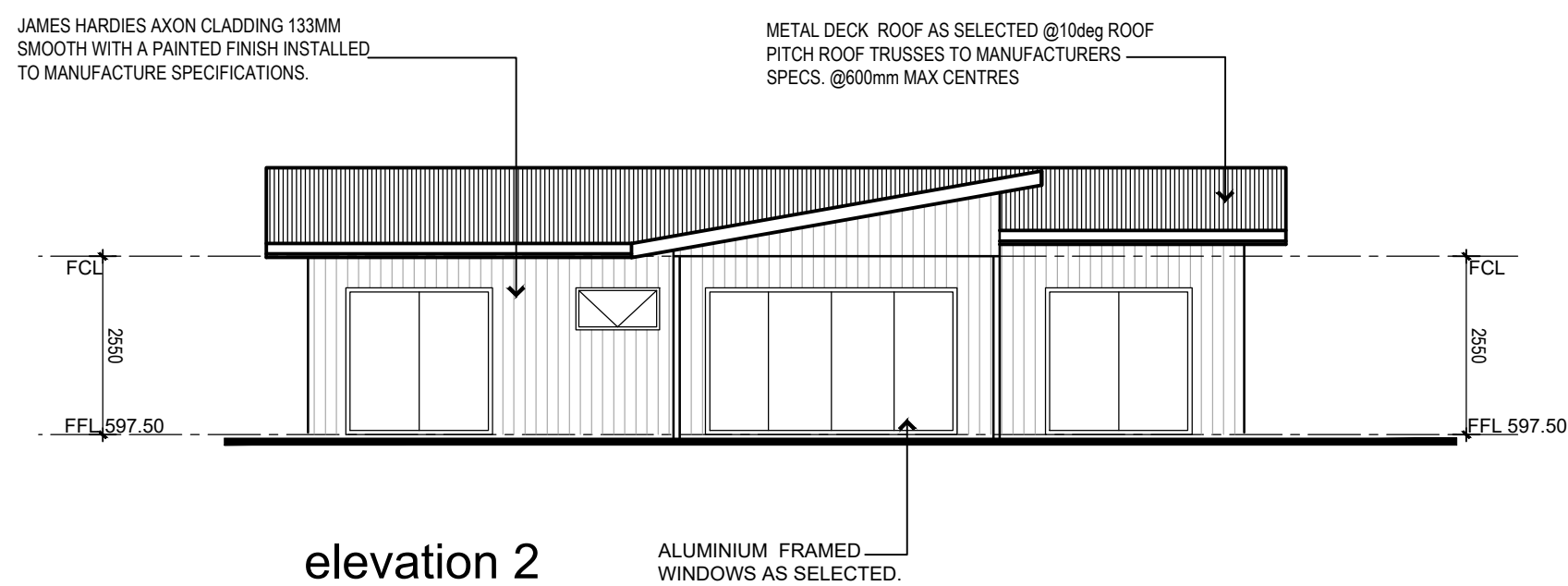
ROOF PLAN



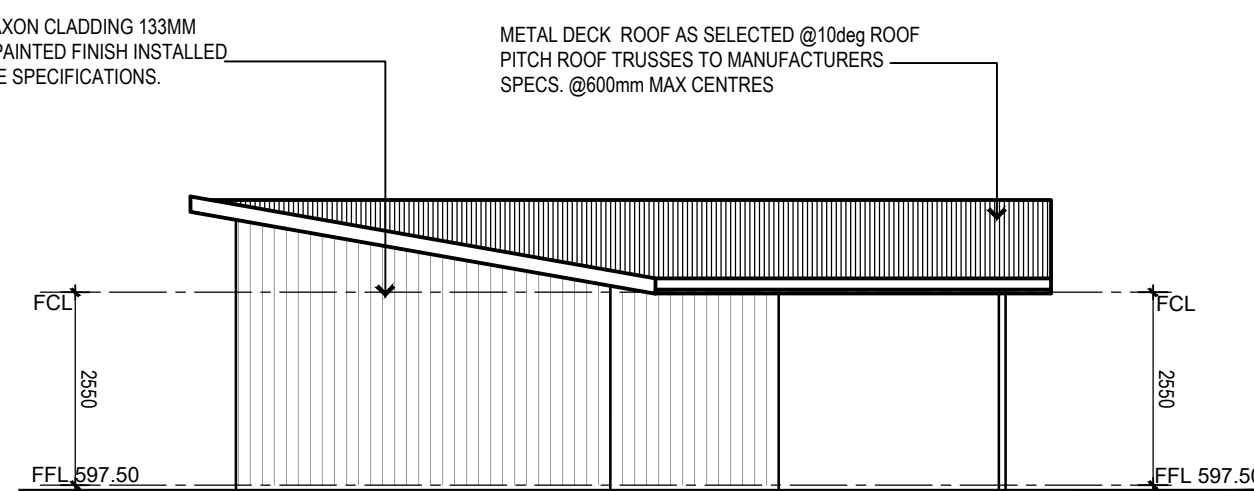
elevation 1



elevation 3



elevation 2



elevation 4

SA [⊕] SMOKE DETECTORS ARE TO COMPLY WITH ABCB HOUSING PROVISIONS PART 9.5.2. NEW SMOKE ALARM NEEDS TO BE INTERCONNECTED AND HARDWIRED WITH EXISTING SMOKE ALARMS IN THE RESIDENCE

THE INSTALLED ROOFING SYSTEM AND ASSOCIATED WORK IS TO INCLUDE ALL CAPPINGS, FLASHINGS AND ACCESSORIES FOR THE COMPLETE ROOFING SYSTEM IN ACCORDANCE WITH THE ROOFING MANUFACTURER'S WRITTEN

REQUIREMENTS AND DETAILS AND TO BE WEATHERPROOF IN ALL RESPECTS. CONFIRM THAT THE SIZES OF GUTTERS AND DOWNPIPES STATED ON DRAWINGS AND DOCUMENTS ARE CAPABLE OF CATERING FOR THE DESIGN WATER SHED IN ACCORDANCE WITH THE REQUIREMENTS OF THE AUSTRALIAN STANDARD.

NOTE

- LIGHTING TO COMPLY WITH NCC 2022
- WATER HEATER IN A HOT WATER SUPPLY SYSTEM TO COMPLY WITH NCC 2022
- HWS TO COMPLY WITH NCC 2022
- WATER PROOFING OF WET AREAS IS TO BE IN ACCORDANCE WITH AS3740 & ALL OTHER RELEVANT CODES AND AUSTRALIAN STANDARDS.

APPLICATION	SURFACE CONDITION
Ramp steeper than 1:14	
Ramp steeper than 1:20 but not steeper than 1:14	P3 or R10
Tread or landing surface	P3 or R10
Nosing or landing edge strip	

- BATHS: FIT FRAME TYPE SO THAT DOOR IS READILY REMOVABLE FROM OUTSIDE OF WC COMPARTMENT OR DOOR TO SWING OUT OF COMPARTMENT IF NOT ACHIEVING 1200 FROM PAN OF DOOR TO PART OF DOORWAY
- SURFACE WATER DRAINAGE WILL COMPLY WITH ACBS HOUSING PROVISIONS PART 3.3
- FLOOR AND DOWN PIPES WILL COMPLY WITH ACBS HOUSING PROVISION PART 7.4
- BOX GETTERS TO BE INSTALLED IN ACCORDANCE WITH A55030.3
- GUTTERS TO BE INSTALLED WITH COMPLY WITH ACBS HOUSING PROVISIONS PART 3.4
- HOUSEHOLD CONSTRUCTION TO COMPLY WITH ACBS HOUSING PROVISIONS PART 5
- STAIRS TO COMPLY WITH ACBS HOUSING PROVISIONS PART 1.2
- WINDOW CONSTRUCTION TO BE IN ACCORDANCE WITH ACBS HOUSING PROVISIONS PART 3.1
- CONDENSATION MANAGEMENT WILL BE COMPLIANT WITH NCC 2022
- ENCLOSUREMENTS WILL COMPLY WITH NCC 2022 i.e. NON COMBUSTIBLE
- ALL ELECTRICAL INSTALLATIONS WILL BE IN ACCORDANCE WITH NCC 2022
- SOUND INSTALLATION IN ACCORDANCE WITH THE ACBS HOUSING PROVISIONS PART 10.7
- PROTECTION OF ODERABLE MATERIALS WILL COMPLY WITH ACBS HOUSING PROVISIONS PART 11.3.7 & 11.3.8

* PROVIDE ARTIFICIAL LIGHT AND VENTILATION TO BE IN ACCORDANCE WITH ABCB HOUSING PROVISIONS PART 10.5 AND 10.6. FOR ALL STRUCTURAL BEAM, POSTS AND THE LIKE REFER TO ENGINEERING PLANS .

FOR ALL HYDRAULIC SERVICES AND THE LIKE REFER TO HYDRAULIC PLANS .

DP =DOWNPIPE
BM =BEAMOVER
MB =METERBOX
POE =ELECTRICAL POINT OF ENTRY

LT =TUB
WM =WASHING MACHINE
S =SINK
F =FRIDGE
O =OVEN
HP =HOT PLATE
PAN =PANTRY
s/d =SLIDING DOORS

BM =BEAMOVER
C =COLUMN
DS =DOUBLE STUD
SL =SKYLIGHT

NATHERS COMMITMENTS

GLAZING:
 MAXIMUM U-VALUE 3.16 SHGC 0.49 -0.55 (AWNING WINDOWS)
 MAXIMUM U-VALUE 3.14 SHGC 0.59 -0.65 (SLIDING WINDOWS)
 MAXIMUM U-VALUE 3.18 SHGC 0.58 -0.64 (FIXED WINDOWS)

INSULATION
MINIMUM R6 INSULATION TO BE INSTALLED TO CEILING WITH R1.3 BLANKET
MINIMUM R1 SLAB EDGE INSULATION TO BE INSTALLED TO CSOG
MINIMUM R2.5 INSULATION TO BE INSTALLED TO EXTERNAL WALLS
MINIMUM R2 INSTALLATION INSTALLED TO INTERNAL WALLS OF BATHROOM.

LIGHTING
ANY DOWN LIGHTS TO BE LED, IC-F COMPLIANT SO TO ALLOW FULL
COVERAGE OF INSULATION.

VENTILATION
ALL EXHAUST FANS TO BE SEALED

COLOUR
MEDIUM (SA 0.5)

[illegible]